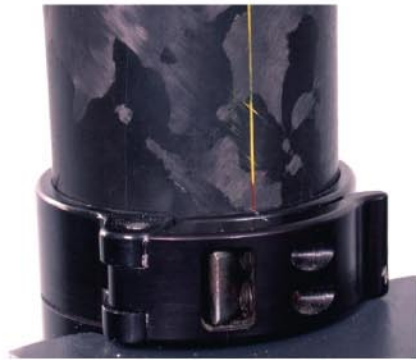


Posts and clamps

The four sections of the telescoping post are adjusted by releasing one or more of the red clamps at the top of each section.

Be sure to support all sled portions that will be freed before you release the clamp.



Do not extend any section beyond the point where the yellow alignment line becomes red.

Note: There is no safety line inside the posts to keep them from separating, but there are electrical wires inside the post that will keep the rig parts together. The longer the rig, the more these wires will act like a safety line, but don't rely on them.

Do not twist the bottom section more than 180 degrees from the top section as this will also twist the internal cables.

If you think you may have inadvertently twisted the internal cables, remove the camera and battery and make the rig as short as possible.

Release the clamp and slide the bottom section (the electronics) completely off.

Examine the curly cord. The two rubber tubes that support the wires should be parallel and not twist.

Rotate the bottom section until the rubber tubing is not twisted, and put the sled back together.

Maintenance Tips:

The Ultra uses several different tool-free clamps. Although they come pre-adjusted at the factory, they will have to be adjusted from time to time.

The key thing is to tighten the clamps a little at a time; a small change in a clamp's adjustment can produce enormous changes in the pressure on the parts. In general, the clamps should be just tight enough to work.



A 3/8ths open end wrench is needed to adjust the cams. Try an eighth turn or less to start, and test not only the strength of the clamp, but be sure it opens and closes easily.

The gimbal clamp, the monitor clamp, and the three main post clamps are tightened via a pair of set screws. These screws are adjusted with an Allen (hex) wrench.



Again, an eighth turn or less is a good starting point. Test that the clamp easily opens and closes, as well as holds both axially and radially.

Give the rig a good spin and a quick stop to be sure nothing shifts.

Be sure that both adjustment screws equally engage the striker plate. This can be done by feel.

Nonpermanent Loctite™ or red nail polish should be used to keep the set screws in place.